

Pilot & Mechanical Valve

Model Domino Junior

Up to 10 bar operating pressure

Superior performance
throughout the
full operational range

Features:

- 316L stainless steel
- Arctic Service options to -60°C
- Air, sweet & sour gases, hydraulic oil



TECHNICAL INFORMATION

Reliability and Innovation in directional control valves

OPERATING MEDIA

- Air, sweet and sour gas, hydraulic oil

FLOW PERFORMANCE

• 1-2	25 SCFM	12 NI/sec	708 NI/min	0.7 Cv
• 2-3	32 SCFM	15 NI/sec	906 NI/min	0.9 Cv

MECHANICAL CONSTRUCTION

- Body:- Stainless steel 316L
- Fasteners:- Metric A4 18/10 316 grade stainless steel
- Seat Material:- Viton (standard). Alternative elastomers available for extreme conditions
- Springs:- Stainless steel 316L
- Ports:- 1/4" thread milled NPT (BSPP options available)

OPERATING PRESSURE

- 0 - 10 bar standard service
- 0 - 8 bar ASJE/AHSJE/ASJJE/AHSJJE

SEAL REPAIR KITS

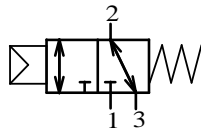
- example codes:-
- SRKSJE06-P1/00-VITON
 - SRKSJE06-P9-VITON
 - SRKSJE06-M1-VITON

TEMPERATURE RANGE:

SJE/HSJE/SJJE/HSJJE	-20°C to +180°C
ASJE/AHSJE/ASJJE/AHSJJE	-60°C to +40°C

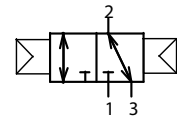
LOGIC VALVES - PREFERRED MODEL LIST

PILOT VALVES:



SJE06-P1-32-NU-00

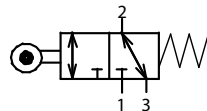
1/4" NPT, Pilot operated, 3 way 2 position, normally universal, (2/2 and 3/2 normally closed operation) spring return, C.v. 0.7, 10 bar (BBB)



SJE06-P1-32-NU-P1

1/4" NPT, Pilot operated, 3 way 2 position, normally universal, pilot return, C.v. 0.7, 10 bar (BBB)

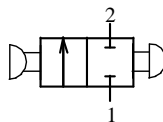
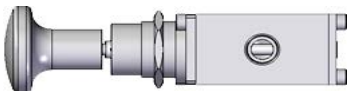
MECHANICAL VALVES:



SJE06-M12-32-NU-00

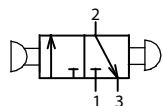
1/4" NPT, Cam operated, 3 way 2 position, normally universal, spring return, C.v. 0.7, 10 bar (BBB)

PANIC VALVES:



SJJE06-2-PV

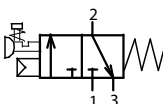
1/4" NPT, 2 way 2 position, push button to block, pull button to bleed, C.v. 0.7 10 bar (BBB)



SJJE06-3-PV

1/4" NPT, 3 way 2 position, push button to block, pull button to bleed, C.v. 0.7 10 bar (BBB)

RESET VALVES:



SJJE06-P1-32-NC-M15-K54

1/4" NPT, Pull button or energise pilot to operate, normally closed, spring return, C.v. 0.7, 10 bar (BAB)



SJJE06-P1-32-NC-M16-K54

1/4" NPT, Pull button or energise pilot to operate, mechanical latch, normally closed, spring return, C.v. 0.7, 10 bar (BAB)



SJJE06-P9-32-NC-M15-K54

1/4" NPT, Pull button to energise air latch pilot, normally closed, spring return, C.v. 0.7, 10 bar (BAB)



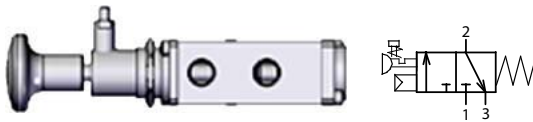
SJJ06-P9-32-NC-M15-K54-K27C

1/4" NPT, Pull button or energise air latch pilot, normally closed, spring return with eyeball indicator from port 2 (green on, red off), C.v. 0.7, 10 bar (BAB)



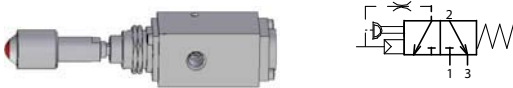
SJJ06-P9-32-NC-M16-K54-K27C

1/4" NPT, Pull button or energise pilot and pull button to operate, mechanical latch, normally closed, spring return with eyeball indicator from port 2 (green on, red off), C.v. 0.7, 10 bar (BAB)



SJJ06-P9-32-NC-M16-K54

1/4" NPT, Pull button or energise pilot and pull button to operate, mechanical latch, normally closed, spring return, preliminary latch pin, C.v. 0.7, 10 bar (BAB)



SJJE06-P9X-32-NC-M15-K54-K27P

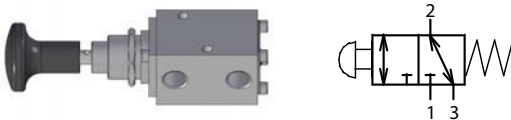
1/4" NPT, Pull button to energise air latch pilot, normally closed, spring return, with eyeball indicator from pilot with restricted feed to port 2 in energised state (green on, red off) C.v. 0.7, 10 bar (BAB)

RESET VALVES:



SJJ06-M2-32-NU-00

1/4" NPT, shrouded push button, normally universal, spring return, C.v. 0.7, 10 bar



SJJ06-M2-32-NU-00-K10

1/4" NPT, push button, normally universal, spring return, C.v. 0.78, 10 bar



SJJ06-M14-32-NU-04

1/4" NPT, push/pull button, normally universal, detented, C.v. 0.7, 10 bar

ALL VALVES ABOVE AVAILABLE FOR HYDRAULIC SERVICE WITH THE ADDITION OF **H** AT THE START OF THE START NUMBER

SELECTION CHART : J06

SJE06 HSJE06 ASJE06 / AHSJE06	gaseous service hydraulic service arctic service (-50°C) gaseous / hydraulic	See Note below	Model Code
P1 M11 M12 M52	pilot operator plunger actuator roller cam operated key operator		Primary Actuator
22 32 52	2-way, 2-position 3-way, 2-position 5-port, 2-position		Configuration
NC NO NU XX	Normally Closed Normally Open Normally Universal 52 valves only		Configuration
00	spring return end cap		Return Devices - Secondary Actuator
P1	pilot operator		Air Pilot - Secondary Actuator
M11 M12	plunger actuator roller cam operated		Hand / Mechanical - Secondary Actuator
K4 K6 K54 L26	valve exhaust bug vent BSPP port option block after bleed (std for HSJ/AHSJ) proximity switch (consult BFP)		Options
SJE06 - P1 - 32 - NC - 00 - K4			Ordering Example

NOTE:- The bodies of the 3 way 2 position junior range have been reduced from 1 1/2" bar stock to 1 1/4" bar stock. This has been reflected by the addition of the letter 'e' in the part code e.g. SJE06, HSJE06 etc. This is applicable to all options except for when using K27 and 5 way 2 position which will remain as SJJ06 etc.

SELECTION CHART : JJ06

SJJE06 / HSJJE06 ASJJE06 / AHSJJE06	gaseous / hydraulic service arctic service (-50°C) gaseous / hydraulic service	See Note below	Model Code
P1 P9 P92	pilot operator air latch pilot operator air latch pilot operator - HSJJ or AHSJJ only		Air Pilot Primary Actuator
M2 M9 M14	shrouded push button panel mounting push / pull (padlockable) panel mounting push / pull panel mounting		Hand / Mechanical Primary Actuator
22 32 52	2-way, 2-position 3-way, 2-position 5-port, 2-position		Configuration
NC NO NU XX	Normally Closed Normally Open Normally Universal 52 valves only		Configuration
00 04 05	spring return end cap blanking cap - M9 & M14 only detented action end cap - M9 & M14 only		Return Devices - Secondary Actuator
M15 M16	pull button spring return with panel mount pull button spring return with preliminary latch & panel mount		Hand / Mechanical - Secondary Actuator
K4 K6 K10 K22 K27 K28 K54 L26	valve exhaust bug vent BSPP port option black plastic button extra panel mount ring eye ball indicator - M15 / M16 only red plastic button block after bleed (std for M15/M16 and HSJJ/AHSJ series) proximity switch (consult Bifold Fluidpower Ltd)		Options
SJJE06 - P9 - 32 - NC - M16 - K54			Ordering Example

NOTE:- The bodies of the 3 way 2 position junior range have been reduced from 1 1/2" bar stock to 1 1/4" bar stock. This has been reflected by the addition of the letter 'e' in the part code e.g. SJJE06, SJE06 etc. This is applicable to all options except for when using K27 and 5 way 2 position which will remain as SJJ06 etc.

UK Offices

Bifold Fluidpower Ltd

Bifold Group, Broadgate, Oldham Broadway, Business Park, Chadderton, Oldham, Greater Manchester, OL9 9XA. UK.

Tel: +44 (0) 161 345 4777

Fax: +44 (0) 161 345 4780

Email: marketing@bifold.co.uk

Web: bifold.co.uk

Marshalsea Hydraulics Limited

Marshalsea House, Venture Way, Priorswood Industrial Estate, Taunton, Somerset, TA2 8DE. UK.

Tel: +44 (0) 161 345 4777

Fax: +44 (0) 161 345 4780

Email: marketing@bifold.co.uk

Web: bifold.co.uk

Bifold Orange

Unit 7, Cosford Business Park, Central Park, Lutterworth, Leicestershire, LE17 4QU, UK.

Tel: +44 (0) 161 345 4777

Fax: +44 (0) 161 345 4780

Email: marketing@bifold.co.uk

Web: bifold.co.uk

USA Office

11490 Westheimer, Suite 850, Houston, TX, 77077.

Tel: +1 (713) 783 4253

Fax: +1 (713) 783 0067

Email: marketing@bifold.co.uk

Web: bifold.co.uk

Asia Pacific Office

511 Guillemard Road #02-03, Grandlink Square, Singapore 399849.

Mobile: +65 98245580

Email: marketing@bifold.co.uk

Web: bifold.co.uk

Quality Assurance

All Bifold Fluidpower products are manufactured to a most stringent QA programme. Every care is taken at all stages of manufacture to ensure that every product will give optimum performance and reliability. We are recognised to EN ISO 9001:2008. Functional test certificate, letter of conformity and copies of original mill certificates, providing total traceability are available on request, to BSEN 10204 3.1 where available. The manufacturer reserves the right to make changes to the specifications and design etc., without prior notice

Accuracy of information

We take care to ensure that product information in this catalogue is reasonably accurate and up-to-date. However, our products and services are continually updated so to ensure accurate and up-to-date information please refer to the issue list on the web site or contact a member of our sales team.

