

Shutdown valves

Type 1073 Master shutdown valve Type 1073 is a pilot-operated, three port, two position poppet valve with a spring-return action.

Manufactured from materials complying with NACE Standard MR-01-75 (latest revision as applicable). The valve can be used in many oil field and gas field applications. The piston-type pilot section of the valve is equally versatile, responding to a wide range of pilot supply pressures and any one of a variety of pneumatic or hydraulic operating media.

With the valve unoperated, Port 3 is connected to Port 5, while Port 4 is isolated. Pilot pressure, applied above the piston, displaces the valve stem, interconnecting Ports 3 and 4 and isolating Port 5. Low friction fluid seals are used for all dynamic sealing and the valve stem is of balanced design so that the valve can be connected for either normally-open or normally-closed operation.

The valve body has a fourth connection (port 2) for a pressure gauge. If this port is not used, it must be sealed with a 1/4" NPT plug (not supplied with the valve).

Operating parameters

Working pressure	690 bar (10,000 psi) max.
Pilot pressure	2.1 to 10.3 bar (30 to 150 psi).
Connections	1/4" NPT all ports.
Leakage rate	4 ml/hour max.
Flow rate, nominal	27 litres/min (6 imp galls/min).
Operating media – poppet section	Mineral oils, water, water-glycol mixtures.
Operating media – pilot section	Air, sour gas or one of the poppet media (above).
Pressure drop	See performance curve.
Working temperature	-20°C to + 130°C.
Recommended filtration	10 micron

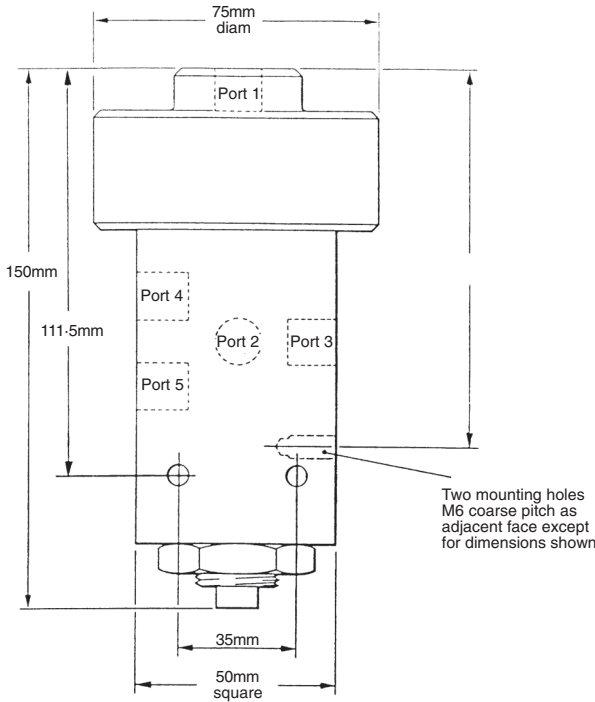


This valve conforms to Directive 94/9/EC relating to equipment intended for use in potentially explosive atmospheres and is ATEX (ATmosphere EXplosible) certified.



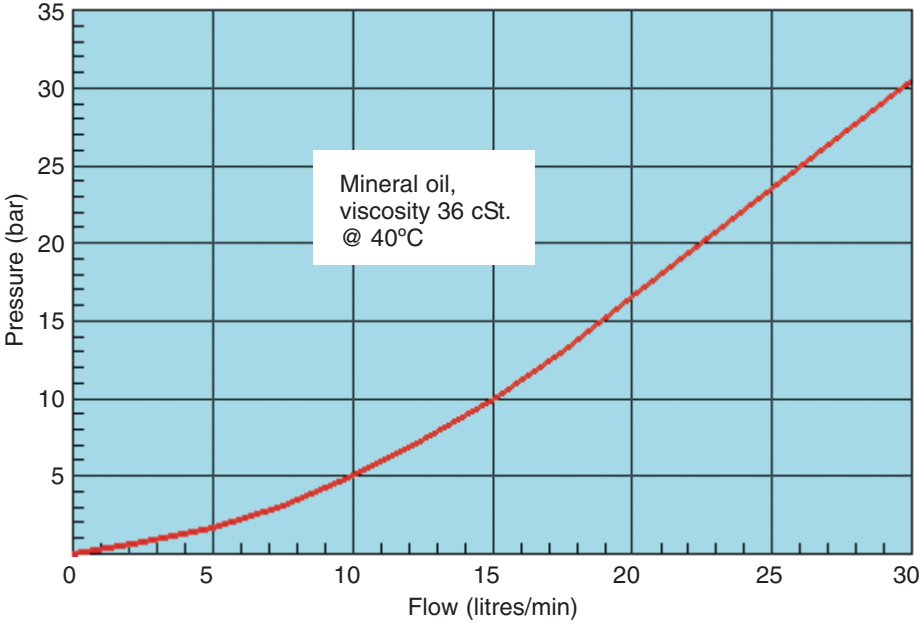
Marshalsea Hydraulics has been assessed by SGS Société Générale de Surveillance SA and certified as meeting the requirements of ISO 9001:2000 for the design, development, manufacture and servicing of hydraulic pumps, relief valves and intensifiers.

Drawing giving dimensions



Weight: 2.5kg

Performance curve



Marshalsea Hydraulics Limited
 Marshalsea House
 Venture Way
 Priorswood Industrial Estate
 Taunton
 Somerset TA2 8DE
 United Kingdom

Tel: 01823 331081
 (+44 1823 331081)
 Fax: 01823 323382
 (+44 1823 323382)
 E-mail info@marshalsea.co.uk
www.marshalsea.co.uk

We reserve the right to alter specifications or withdraw products without notice

Shutdown valves

Types 1074/1174

Master shutdown valve Types 1074/1174 are pilot-operated, three port, two position poppet valves with a spring-return action. Type 1074 has screwed connections, whereas Type 1174 is manifold mounted.

Manufactured from materials complying with NACE Standard MR-01-75 (latest revision as applicable), the valve can be used in many oil field and gas field applications. The piston-type pilot section of the valve is equally versatile, responding to a wide range of pilot supply pressures and any one of a variety of pneumatic or hydraulic operating media.

With the valve unoperated, Port 3 is connected to Port 5, while Port 4 is isolated. Pilot pressure, applied above the piston, displaces the valve stem, interconnecting Ports 3 and 4 and isolating Port 5. Low friction fluid seals are used for all dynamic sealing so that the valve can be connected for either normally-open or normally-closed operation.

Operating parameters

Working pressure	690 bar (10,000 psi) max.
Pilot pressure	103 to 345 bar (1,500 to 5,000 psi).
Flow rate, nominal	27 litres/min (6 imp galls/min).
Operating media – valve	Mineral oils, water, water-glycol mixtures.
Operating media – pilot	Air, sour gas or one of the poppet media (above).
Working temperature	-20°C to + 130°C.
Recommended filtration	10 micron

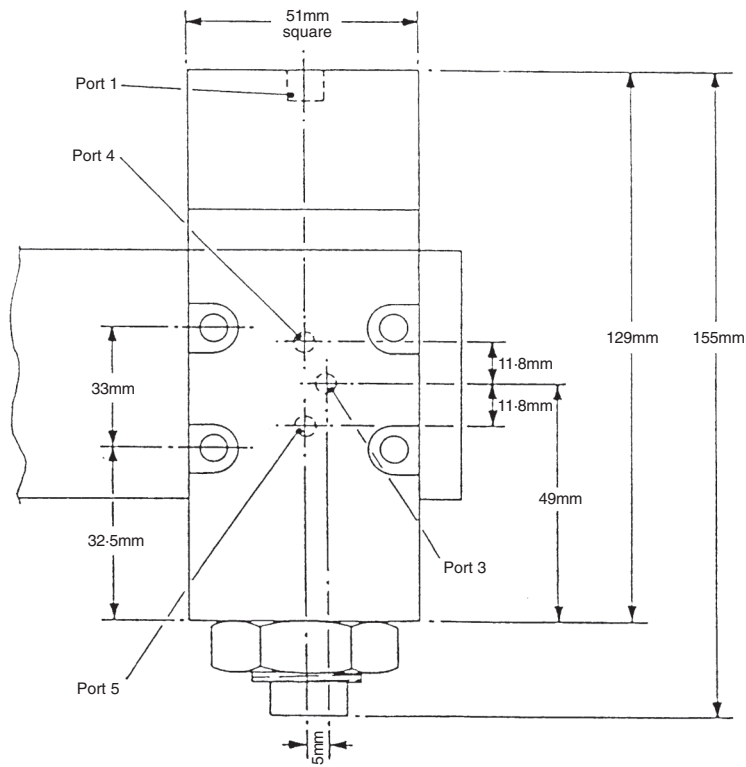


These valves conform to Directive 94/9/EC relating to equipment intended for use in potentially explosive atmospheres and is ATEX (ATmosphere EXplosible) certified.



Marshalsea Hydraulics has been assessed by SGS Société Générale de Surveillance SA and certified as meeting the requirements of ISO 9001:2000 for the design, development, manufacture and servicing of hydraulic pumps, relief valves and intensifiers.

**Drawing giving
dimensions**



Weight: 3kg



Marshalsea Hydraulics Limited
Marshalsea House
Venture Way
Priorswood Industrial Estate
Taunton
Somerset TA2 8DE
United Kingdom

Tel: 01823 331081
(+44 1823 331081)
Fax: 01823 323382
(+44 1823 323382)

E-mail info@marshalsea.co.uk

www.marshalsea.co.uk

We reserve the right to alter specifications or withdraw products without notice



Shutdown valves

Type 1175 Master shutdown valve Type 1175 is a pilot-operated, three port, two position poppet valves with a spring-return action.

Manufactured from materials complying with NACE Standard MR-01-75 (latest revision as applicable), the valve can be used in many oil field and gas field applications. The piston-type pilot section of the valve is equally versatile, responding to a wide range of pilot supply pressures and any one of a variety of pneumatic or hydraulic operating media.

With the valve unoperated, Port 3 is connected to Port 5, while Port 4 is isolated. Pilot pressure, applied above the piston, displaces the valve stem, interconnecting Ports 3 and 4 and isolating Port 5. Low friction fluid seals are used for all dynamic sealing so that the valve can be connected for either normally-open or normally-closed operation.

Operating parameters

Working pressure	690 bar (10,000 psi) max.
Pilot pressure	200 to 690 bar (2,900 to 10,000 psi).
Flow rate, nominal	27 litres/min (6 imp galls/min).
Operating media – valve	Mineral oils, water, water-glycol mixtures.
Operating media – pilot	Mineral oils, water, water-glycol mixtures.
Working temperature	-20°C to + 130°C.
Recommended filtration	10 micron



This valve conforms to Directive 94/9/EC relating to equipment intended for use in potentially explosive atmospheres and is ATEX (ATmosphere EXplosible) certified.



Marshalsea Hydraulics has been assessed by SGS Société Générale de Surveillance SA and certified as meeting the requirements of ISO 9001:2000 for the design, development, manufacture and servicing of hydraulic pumps, relief valves and intensifiers.

